



Website: www.displaytech-us.com

Embedded Demonstration Board Product Specification

EMB028TFT-PTS DEMO

*2.8" Color TFT Display with Capacitive Touch
Demonstration Board*

Table of Contents

1. INTRODUCTION	3
2. GENERAL SPECIFICATIONS.....	3
3. MECHANICAL DRAWING	4
4. SCHEMATIC.....	ERROR! BOOKMARK NOT DEFINED.
5. EXAMPLE FIRMWARE	6

1. Introduction

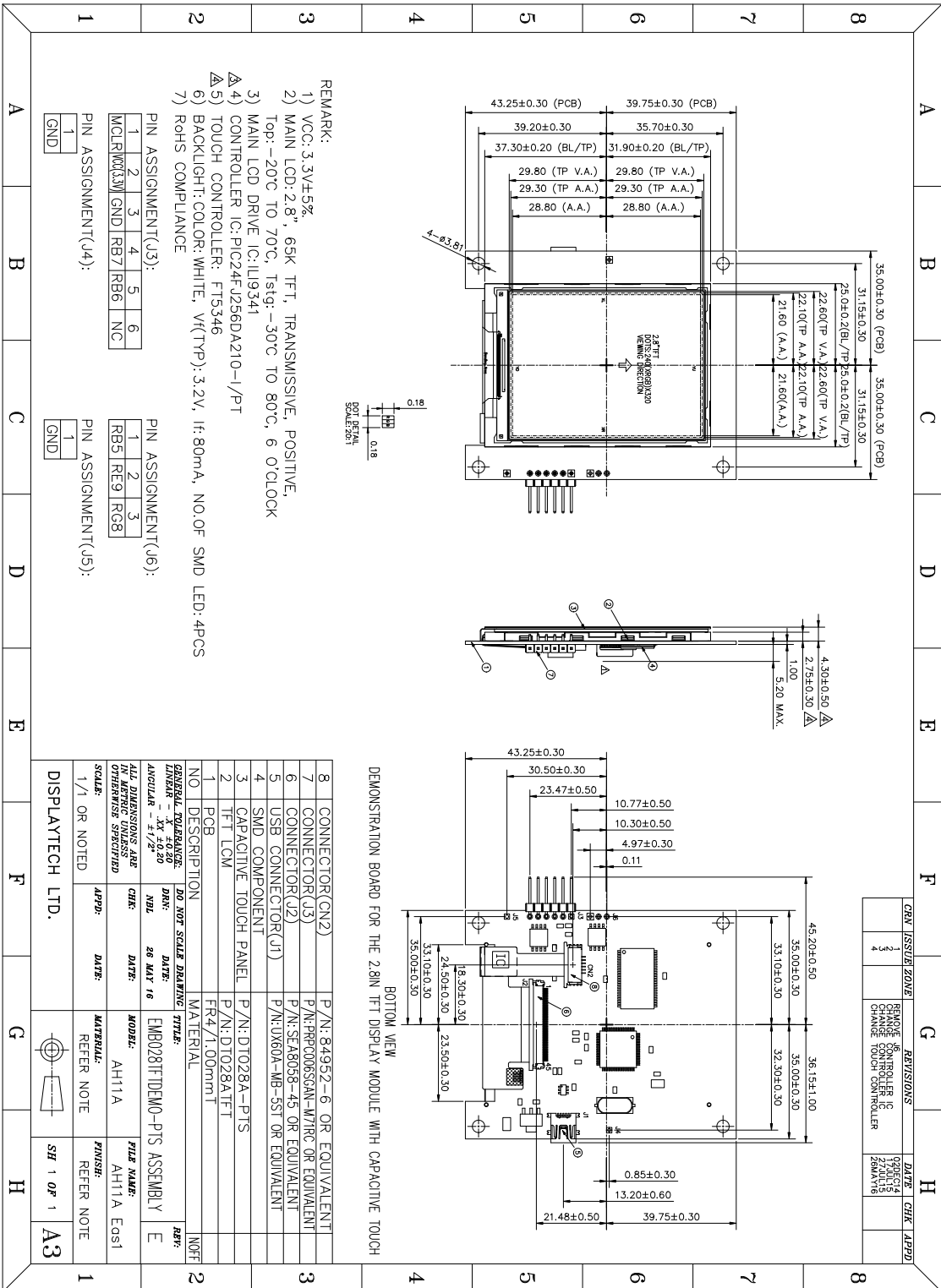
The Displaytech EMB028TFT-PTS DEMO is a demonstration and development board for the Displaytech DT028TFT 2.8" color TFT display with capacitive touchscreen. The display is controlled by a Microchip PIC24FJ256DA210 microcontroller with integrated graphics controller. Furthermore, the demonstration board includes on-board external SRAM for extra frame-buffer memory as well as SPI flash for storing fonts and images.

The touchscreen is a projected capacitance type with an I2C interface. The I2C address is 0x38 (7-bit) or 0x70/0x71 (8-bit write/read).

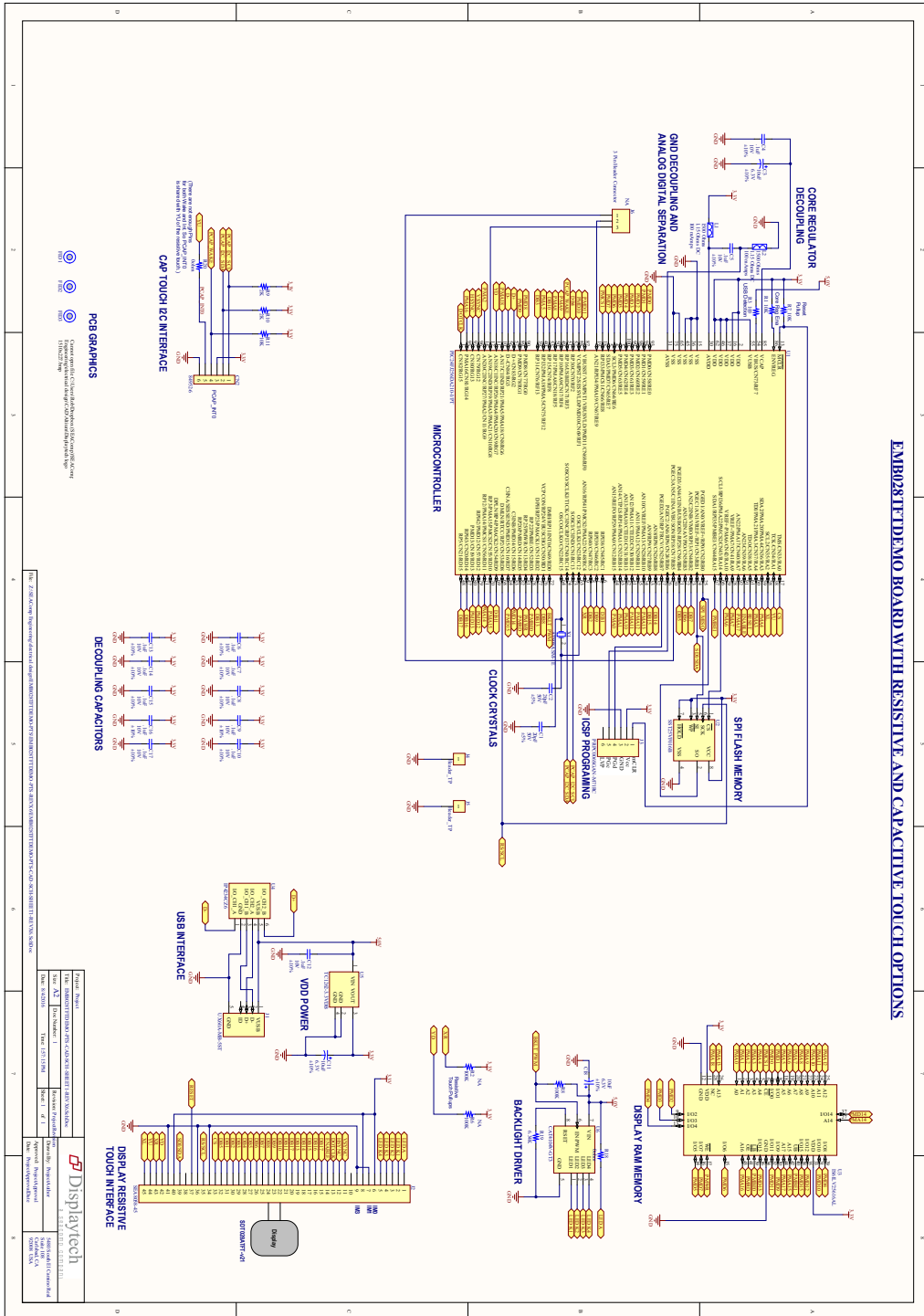
2. General Specifications

Item	Specification	Unit
LCD Resolution (Horizontal)	320	Line
LCD Resolution (Vertical)	240	Line
PCB Size (Horizontal)	70	mm
PCB Size (Vertical)	83	mm
Programming Interface	USB and PICKit	---
TFT Driver IC	ILI9341	---
Capacitive Touch Screen Driver	FT5346	
Microcontroller/Graphics Controller	PIC24FJ256DA210	---
SRAM Size	512	KB
External SPI Flash Size	2	MB
Power Supply	5 (from USB)	V

3. Mechanical Drawing



4. Schematic



5. Example Firmware

Example firmware running the Microchip Graphics Object Layer demonstration can be obtained from Displaytech sales.

Note: Microchip's MPLABX IDE and Pikit3 programmer will be required to run the demo. Both are available at <http://www.microchip.com>.

Detailed programming instructions are also available from Displaytech sales.